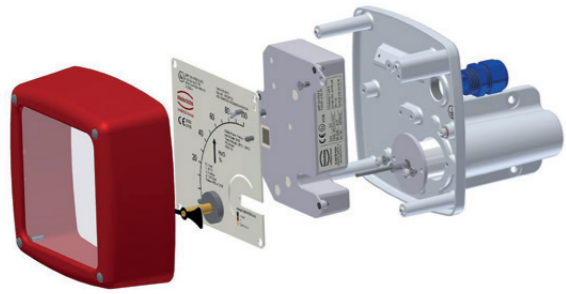


## Prooven since more than 60 years Variable Area Flow Meters



- › Performance in communication and reliability
- › Compact transducer with HART, Profibus, Fieldbus
- › SIL2 compatibility acc. FMEDA



100 YEARS PROCESS-INSTRUMENTATION 1911-2011  
We measure flow, mass, density, level and pressure



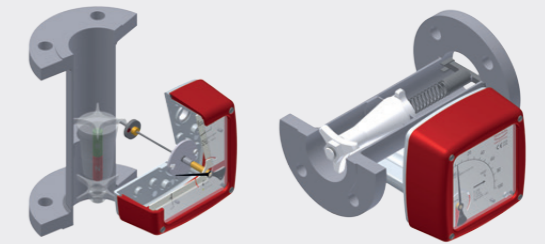
100 YEARS PROCESS-INSTRUMENTATION 1911-2011  
We measure flow, mass, density, level and pressure




Heinrichs Messtechnik GmbH  
Robert-Perthel-Straße 9 | 50739 Köln  
Tel. 49 (0)221-49708 0  
Fax. 49 (0)221-49708 178  
info@heinrichs.eu | www.heinrichs.eu



## Heinrichs All Metall Variable Area Flow Meters



- › **All Metall stainless steel design** 
- › st.st. indicator
- › Dirt insensitive star-guiding of the float
- › High temperature version up to 350 °C
- › High pressure up to 600 bar
- › Media heating possible (liquid, steam)
- › PTFE lining
- › Customized version e.g. for sour gas
- › Special materials hastelloy, titanium, monel and other

### › Signal Output

- Analog output - transducer ES
- Inductive contacts
- Safety contacts
- Micro switches
- HART
- Profibus
- Fieldbus Foundation

### › Explosion proof certification Atex, IEC-Ex and other

### › NAMUR NE 21



## Variable Area Flow meters for all fitting positions

Available from stock or within 48 hours

- › Low Volume Glass Tube Variabel Area Flow Meter
- › Low Volume All Metall Variable Area Flow Meter
- › In-Line Glass Tube Variable Area Flow Meter
- › All Metall Variabel Area Flow Meter
- › All Metall Flow Meter for horizontal mounting
- › Plastic Tube Variable Area Flow Meter

# Heinrichs All Metall

## Variable Area Flow Meters

### > All Metall Variable Area Model: BGN/BGF



### BGN - The ALL-ROUNDER and ENDURANCE performer

<b>Nominal sizes</b>	½"…6", ±1,6 % of actual
<b>Ranges</b>	0,5-5...13000-130.000 l/h water 0,015-0,15...240-2400 Nm3/h air
<b>Tmax</b>	350 °C
<b>Pmax</b>	up to 500 bar

### BGF - For horizontal installation

<b>Nominal sizes</b>	½" ...3"; ± 2,0 % of actual
<b>Ranges</b>	10-100...4000-40.000 l/h water 0,3-0,3...110-1100 Nm3/h air

- > 2 limit switches
- > Analog output + limit switches / totalizer + display
- > HART / Profibus / Fieldbus
- > Flange / Swagelok / TriClamp / DIN 11851 and other
- > st.st. / hastelloy / PTFE lining / monel / titanium



### > All Metall Variable Area Model: KDS/BGK

with fine  
adjustment  
valve  
Model:  
KDS



In-Line  
Version  
Model:  
BGK



with fine  
adjustment valve  
and inlet /outlet  
pressure regulator  
Model: KDS-R



### Measure Low Volume accurate and save

<b>Ranges</b>	0,1-1...20-200 l/h water 0,16-0,16...600-6000 NI/h air
---------------	---

- > In-Line Version with flange connection
- > Version c/w fine adjustment valve; inlet / outlet
- > Version c/w inlet /outlet pressure regulator and valve

- > 2 limit switches
- > 2 Safety switches
- > Analog output + limit switches
- > HART  
Flange / Swagelok / TriClamp / DIN 11851 and other  
st.st. / hastelloy / PTFE lining / monel / titanium



# More Variabel Area Flow Meters

## Short-term available

### The classic one - Glass Tube Variable Area-In-Line

<b>Nominal sizes</b>	½"…2 ½", ±1,6 % of actual
<b>Ranges</b>	2,5-25...1000-10.000 l/h water 0,8-0,8...28-280 Nm3/h air
<b>Tmax</b>	100 °C
<b>Pmax</b>	15 bar

### >V31 Glass Tube Variable Area Flow Meter full bore

- > Flange connection
- > Threaded connection
- > Hose connection
- > Float in st.st., PVDF
- > Installation length 375 / 400 / 425 / 450 / 500 mm



### Low Volume safe under control

Glass tube measuring tube with precision float

<b>Mounting length</b>	90 / 125 / 175 / 320 mm
<b>Accuracy</b>	± 1% / 2% / 3% of actual, acc. to length
<b>Ranges</b>	0,02-0,25...10-100 l/h water 2-20...300-3000 NI/h air
<b>Tmax</b>	100 °C
<b>Pmax</b>	15 bar

### >Low Volume Glass Tube Variabel Area Flow Meter with fine adjusting valve

- > K09
- > K12
- > K17
- > K32
- > 2 limit switches
- > 90-320 mm length of glass
- > Inlet /outlet pressure regulator
- > Process conections G / NPT / Swagelok / Gyrolok / Ermeto



### Low Volume Plastic Tube Variable Area Flow Meter - Watch your costs

<b>Measuring tube</b>	Trogamide or Polysulfon
<b>Accuracy</b>	Class 4
<b>Ranges</b>	1,5-15...100-1000 l/h water 0,15-0,45...20-105 Nm3/h air
<b>Tmax</b>	100 °C
<b>Pmax</b>	10 bar

### >KSK – Plastic Tube Variable Area Flow Meter Low volume

- > 2 limit switches
- > Connection G ¾ - G 11/2 AG, glue pipe PVC



### Plastic tube Flow Meter - Put your hands on the costs

<b>Measuring tube</b>	Trogamid or Polysulfon
<b>Accuracy</b>	Class 4
<b>Ranges</b>	15-150...8000-60.000 l/h water 0,8-5...100-860 m3/h air
<b>Tmax</b>	100 °C
<b>Pmax</b>	16 bar

### >KSM – Plastic Tube Variable Area Flow Meter

- > 2 limit switches
- > Connection G 11/2 - G 21/2 AG, glue pipe PVC, flange

